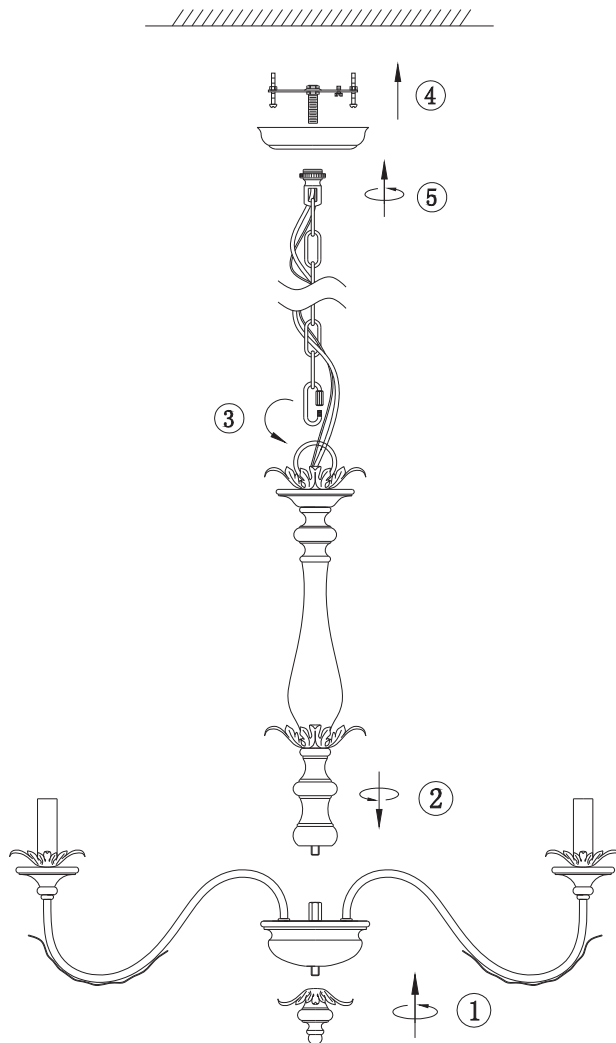


Oaks Decor

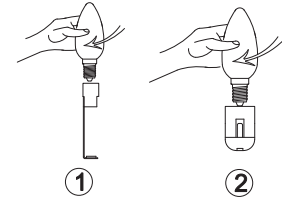


FC4010

Cautions of installation

Install the bulbs

Hold the bulb firmly
(you should not touch the
hardware part in case of
electric shock) and then install
it clockwise till it is firm



If you have any questions, or any parts missing,
damaged or malfunction, it is not necessary to uninstall
and return it back.

Please contact us directly for professional and fast help:
Support@OaksDecor.com

